



FOUR SEASONS

PRIVATE RESIDENCES

JEDDAH AT THE CORNICHE

مساكن خاصة - فندق فورسيزونز كورنيش جدة



فانا المحدودة
FANA LTD.



Rising along the Red Sea this is a place shaped by intention where architecture culture and lifestyle come together to form something lasting and meaningful.





On this ancient shoreline

Where wind water and light have shaped centuries.
A new chapter quietly rises.
Created for those who understand that true luxury.

Is not loud,
It is felt.

A NEW STORY ON THE RED SEA





THE MINDSET BEHIND THE *ADDRESS*

Founded on care shaped by purpose



Isadore Sharp

Isadore Sharp is the founder of Four Seasons whose belief that true luxury begins with care respect and attention to detail continues to shape every Four Seasons experience around the world.

A place where the Red Sea whispers its endless horizon into every day welcomes a life composed with intention and meaning welcome to A Landmark Story a landmark shaped by calm by beauty and by permanence guided by the belief of Isadore Sharp who founded Four Seasons on a simple principle that true luxury lives in care respect and the way people are treated a philosophy that continues to shape every Four Seasons experience including this one in Jeddah.



THE ART OF
GENUINE CARE

*The essence of Four Seasons comes
from a timeless truth:*

**“TREAT PEOPLE
THE WAY YOU
WOULD LIKE TO
BE TREATED.”**



A GATEWAY TO THE *NEW JEDDAH*

Where a city's future finds its address



Jeddah is entering a new era shaped by confidence, ambition, and a renewed global presence. A city long defined by openness is now redefining what it means to belong to the future at the edge of the Red Sea. A new chapter quietly takes form, one that does not follow transformation but leads it, where culture, commerce, and lifestyle align, and where the rhythm of the city meets a more intentional way of living. This gateway is not only an address but a moment in Jeddah's story where progress feels natural, vision feels grounded, and the future feels unmistakably at home.

JEDDAH



A CITY THAT
HAS ALWAYS
WELCOMED
THE WORLD

Before it was a destination

For centuries Jeddah has been a city of passage welcoming cultures ideas and stories from across the world.

Here heritage is not preserved in the past but carried forward creating a city that balances depth authenticity and a distinctly modern rhythm.





WHERE HERITAGE *MEETS TOMORROW*

Before it was a destination

Rich with culture, warmth, and timeless hospitality.

A city that holds its heritage dearly,
yet opens its arms to the world.



- Jeddah Yacht Club & Marina 20 min
- Formula 1 Saudi Arabian Grand Prix 18 min
- Airport Train Station 27 min
- King Abdulaziz International Airport 27 min
- Red Sea Mall 9 min

Jeddah Waterfront 8 min



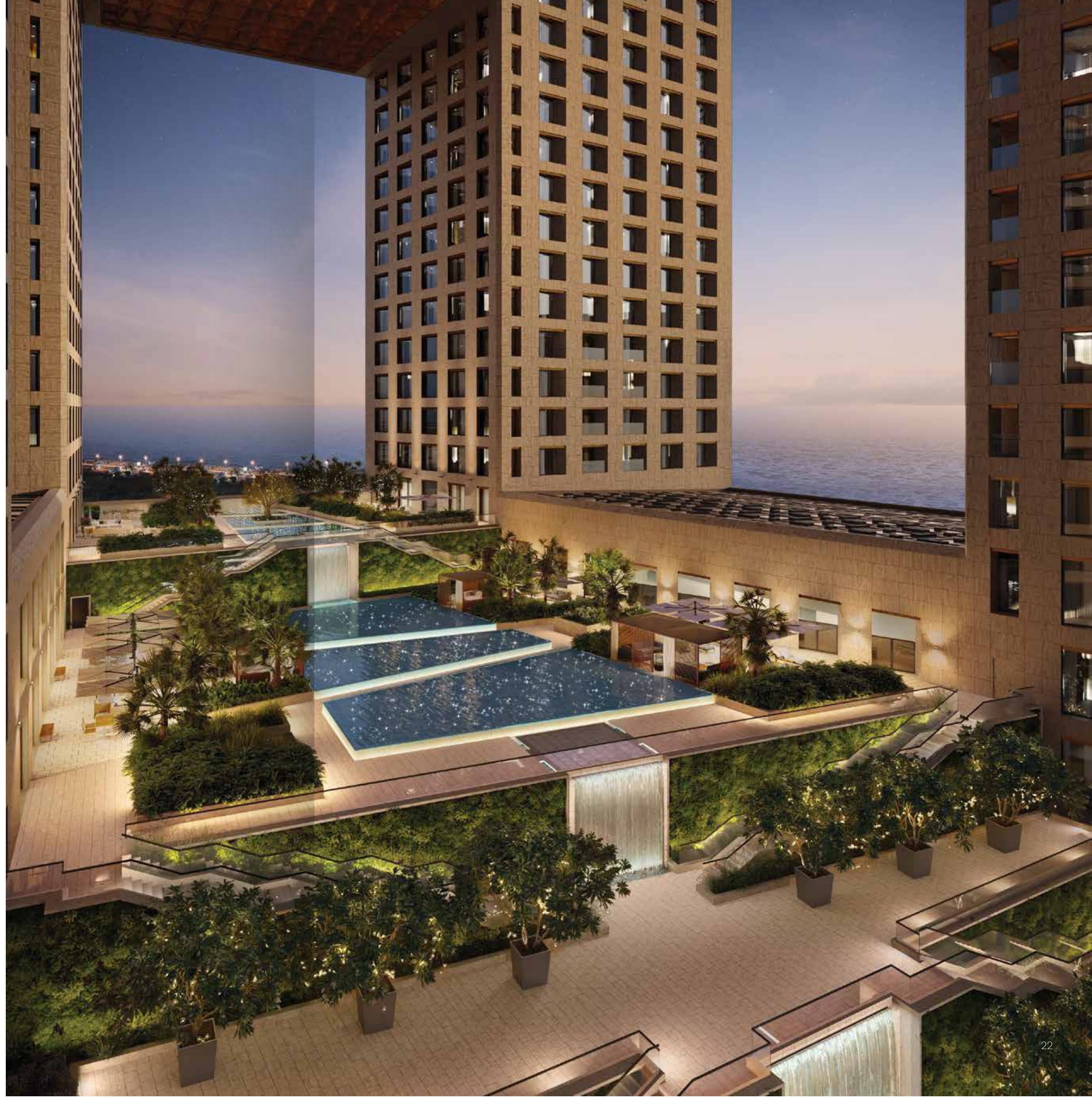
Jeddah Central 9 min

PROJECT LOCATION

At the edge of the city

Located along Jeddah's Corniche the project overlooks the Red Sea while remaining closely connected to the city offering a rare balance between openness privacy and everyday accessibility.

WELCOME
TO
A NEW
HORIZON





FOUR SEASONS
PRIVATE RESIDENCES
JEDDAH AT THE CORNICHE
مساكن خاصة - فندق فورسيزونز كورنيش جدة
A MIDAD REAL ESTATE DEVELOPMENT

THE ICON

Rising along the Red Sea, the form asserts itself with undeniable authority. Its clarity speaks louder than any ornament. Every line, every proportion conveys confidence. From every angle, the building embodies a single, deliberate gesture, a silhouette of purpose, balance, and unmistakable presence. Height is surpassed by the power of being.

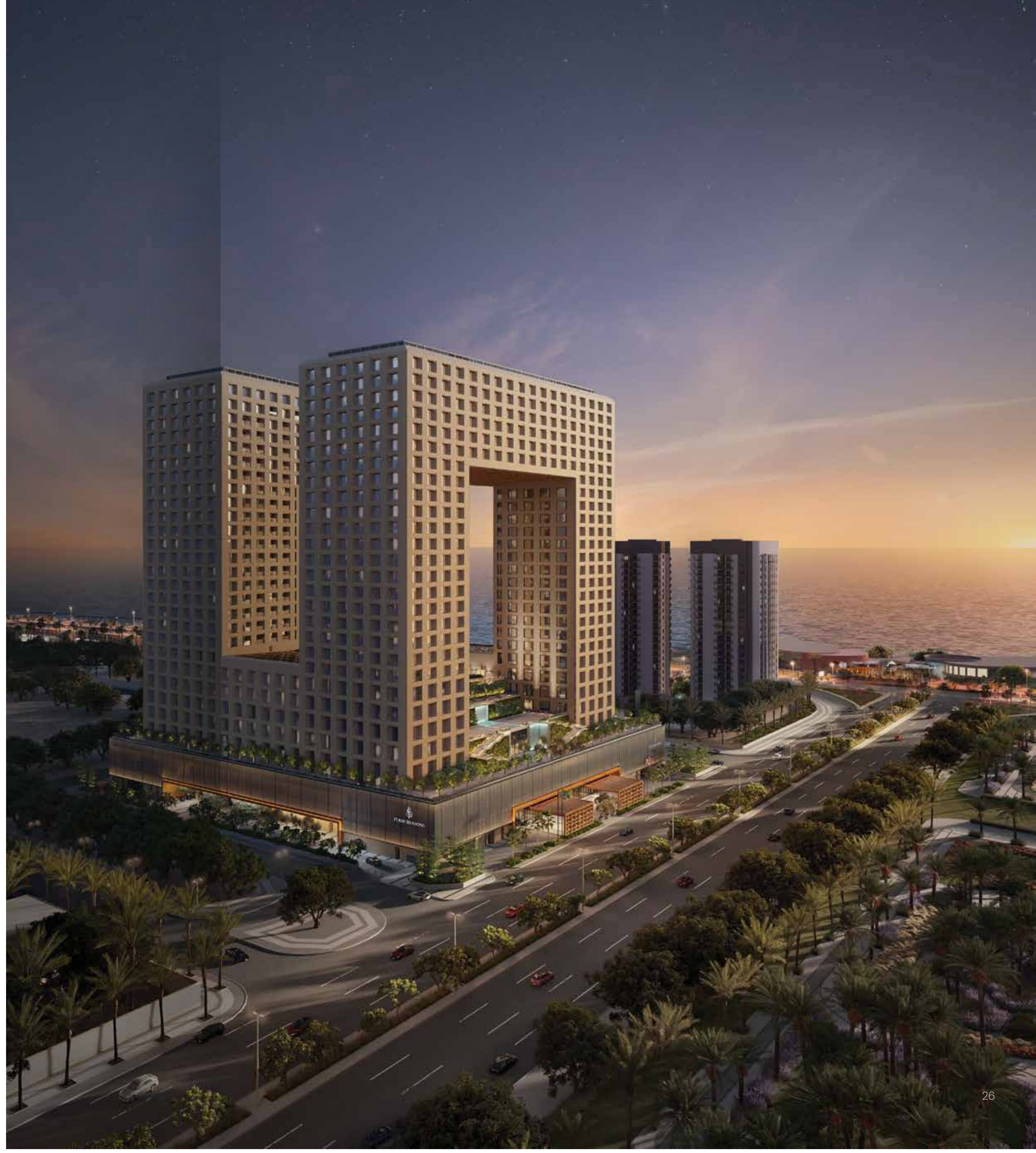
WHERE *ARCHITECTURE* MEETS THE *HORIZON*

Here, architecture becomes emotion

Geometry meets landscape in perfect dialogue. Sharp edges soften against the vastness of the sea. Solid mass merges with infinite horizon. Each elevation is intentional.

A sculptural expression of harmony

Light dances across every surface, shifting the façade as the day unfolds. A landmark that anchors the Corniche, elevates the city, and commands attention from near and far.







ARCHITECTURE *THAT HOLDS* MEANING

*Architecture here is not designed to impress
at first glance*

Rising along the Red Sea, the structure reveals itself slowly, through light, proportion, and the deliberate dialogue between solid form and open horizon. This is architecture with restraint, where confidence replaces excess, and every line carries intention.

Four interconnected towers encircle a terraced inner garden, creating a sense of inward calm while opening outward to the sea. It is a composition of balance: urban presence softened by nature, scale refined through detail.

A LANDMARK
SHAPED BY
PURPOSE

*The artistry lies not in
ornament, but in orchestration.*

This is architecture that understands its
responsibility.

To the city.
To the residents.
To generations yet to come.

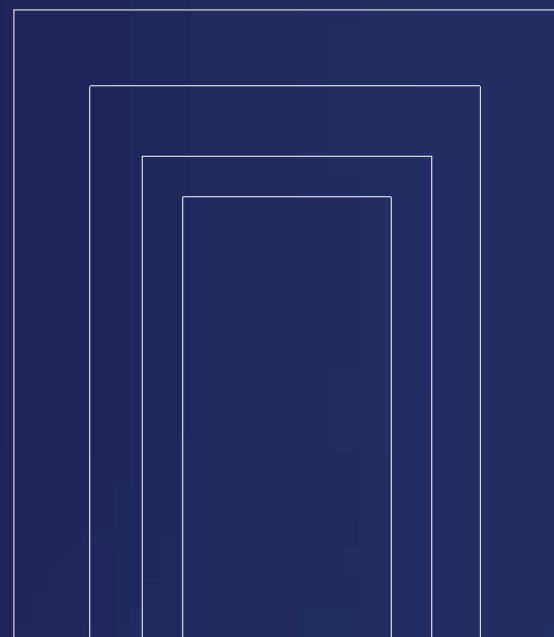




A WAY OF LIVING

Built to Belong

Life at Four Seasons is centered on people, not places. It unfolds with ease, guided by care, familiarity, and a quiet understanding of what makes daily living feel effortless. Here, belonging is immediate — felt, not explained.





Made to Endure

What defines life with Four Seasons is continuity. Care that does not change, service that remains familiar, and a way of living built on trust over time. The experience grows stronger through consistency, where reliability becomes comfort, and comfort becomes permanence.

A QUIET
TRANSITION
FROM THE
WORLD
OUTSIDE
TO THE
SANCTUARY
WITHIN

THE ARRIVAL

A Quiet Sense of Welcome

Arrival is composed, calm, and deliberate. Cascading water, softened light, and controlled movement transition residents from the city into a private world of ease and assurance.





A WELCOME
CRAFTED
UNIQUELY
FOR YOU

RESIDENTIAL LOBBIES

Refined by Design

Double-height spaces, curated materials, and subtle detailing create an atmosphere of understated elegance.

The lobby is not a passage, it is a statement of arrival and belonging.





Life unfolds with quiet precision. Daily routines are supported by intuitive service, thoughtful design, and a setting that adapts to the rhythm of its residents.

THE FOUR SEASONS LIFE

EVERYDAY
ELEVATED

*Nothing Asked.
Everything Known.*

Preferences are anticipated, not requested. This is living shaped by care, consistency, and a culture that understands long-term ownership.





GENUINE CARE CREATES LASTING VALUE.

This philosophy defines every interaction, every space, and every decision.



THE GOLDEN RULE

Human at Its Core



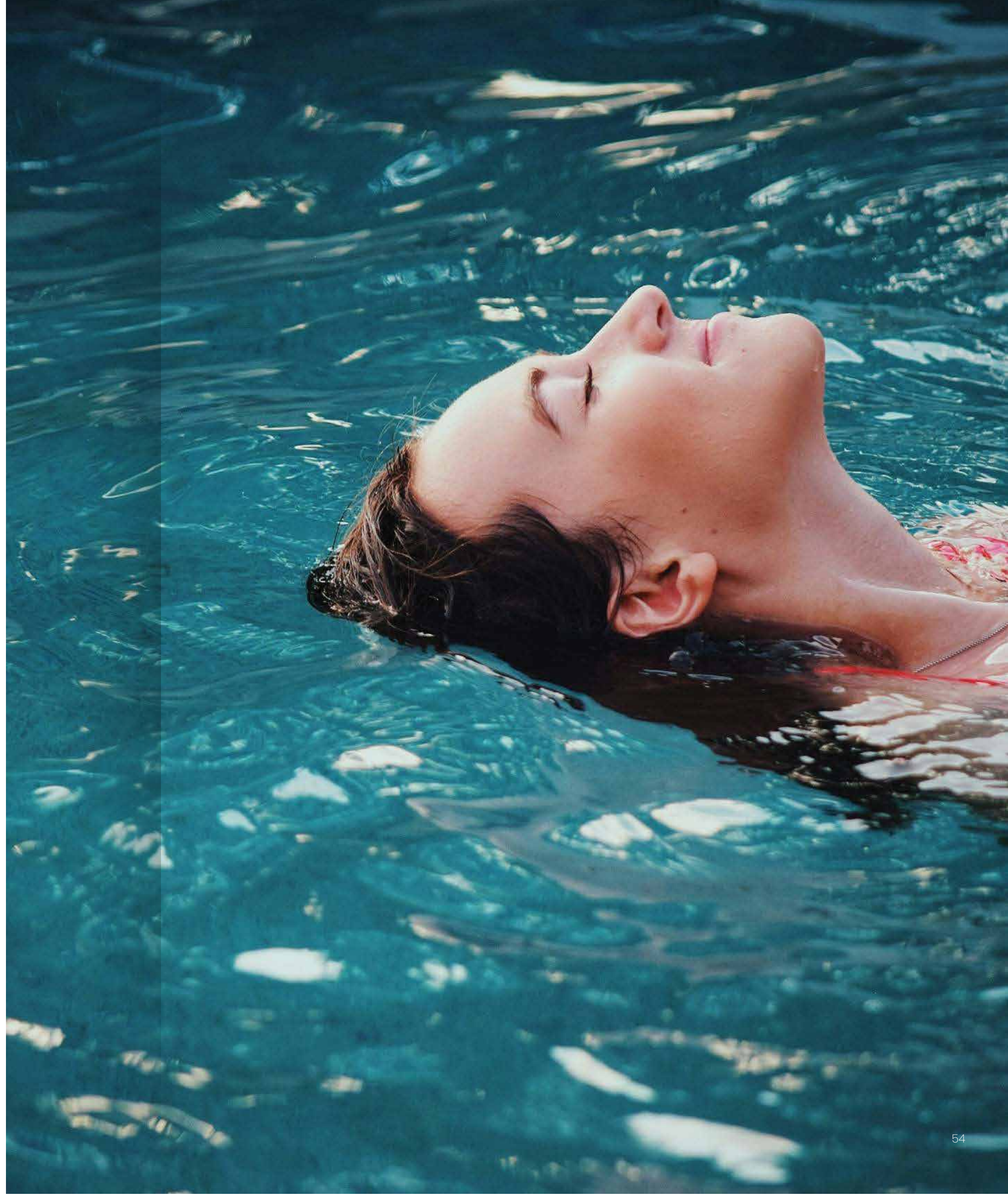
Service here is not a feature, it is a culture. One that places people first and treats ownership as a long-term relationship.



EACH
ENVIRONMENT
INVITES YOU
TO SLOW
DOWN.

To reconnect.

To simply be.



RESIDENCES AMENITIES

RESIDENTS' POOL

INDOOR POOL	Temperature-controlled High-privacy, owners-only Spa-like environment with refined finishes
RELAXATION	Quiet seating areas Soft lighting & wellness ambience

FITNESS & WELLNESS

FITNESS CENTERS	Men's & women's gyms Premium strength & cardio equipment Stretching & functional zones
WELLNESS SUITES	Private treatment rooms Relaxation lounges Four Seasons-standard wellness services

RESIDENTS' CLUB

LOUNGE & SOCIAL AREAS	Exclusive residents' lounge Elegant seating & sea-view ambience
MEETING & ENTERTAINING	Private meeting rooms Entertaining kitchen Outdoor terrace with Red Sea views

SERVICES & SUPPORT

24/7 RESIDENTIAL SERVICES	Concierge Security Property management
MOBILITY & ACCESS	Valet parking Dedicated residential lobbies Controlled-access elevators

PARKING & ENTRY

RESIDENT-ONLY PARKING	Secured indoor parking Direct tower access
VALET & VEHICLE CARE	Full valet service VIP vehicle handling

IN-HOME FEATURES

KITCHENS & APPLIANCES	Designer kitchens Premium integrated appliances Show kitchen + service kitchen (in larger units)
INTERIOR DESIGN & FINISHES	Stone bathrooms Spa-inspired suites High-grade wood & metal details
VIEWS & LIGHT	Floor-to-ceiling glazing Private balconies overlooking the Red Sea



HOTEL AMENITIES

WELLNESS & SPA

THERMAL EXPERIENCES	Hammam Sauna Steam Rooms Snow Room Experience Showers
TREATMENT SUITES	Massage Beauty Body care Signature wellness rituals
RELAXATION AREAS	Indoor pools Quiet lounges Wellness terraces

DINING & CULINARY

RESTAURANTS	All-Day Dining Signature Fine Dining Coastal-inspired culinary experiences
LOUNGES	Lobby lounge Cocktail bar Terrace lounge
PRIVATE DINING	Exclusive private dining rooms for residents & guests

POOLS & OUTDOOR LIVING

OUTDOOR POOLS	Resort-style family pool Adult quiet pool Sun terraces
GARDENS & TERRACES	Landscaped gardens Hanging gardens Shaded outdoor lounges
LEISURE SPACES	Cabanas Relaxation decks Sea-view seating areas

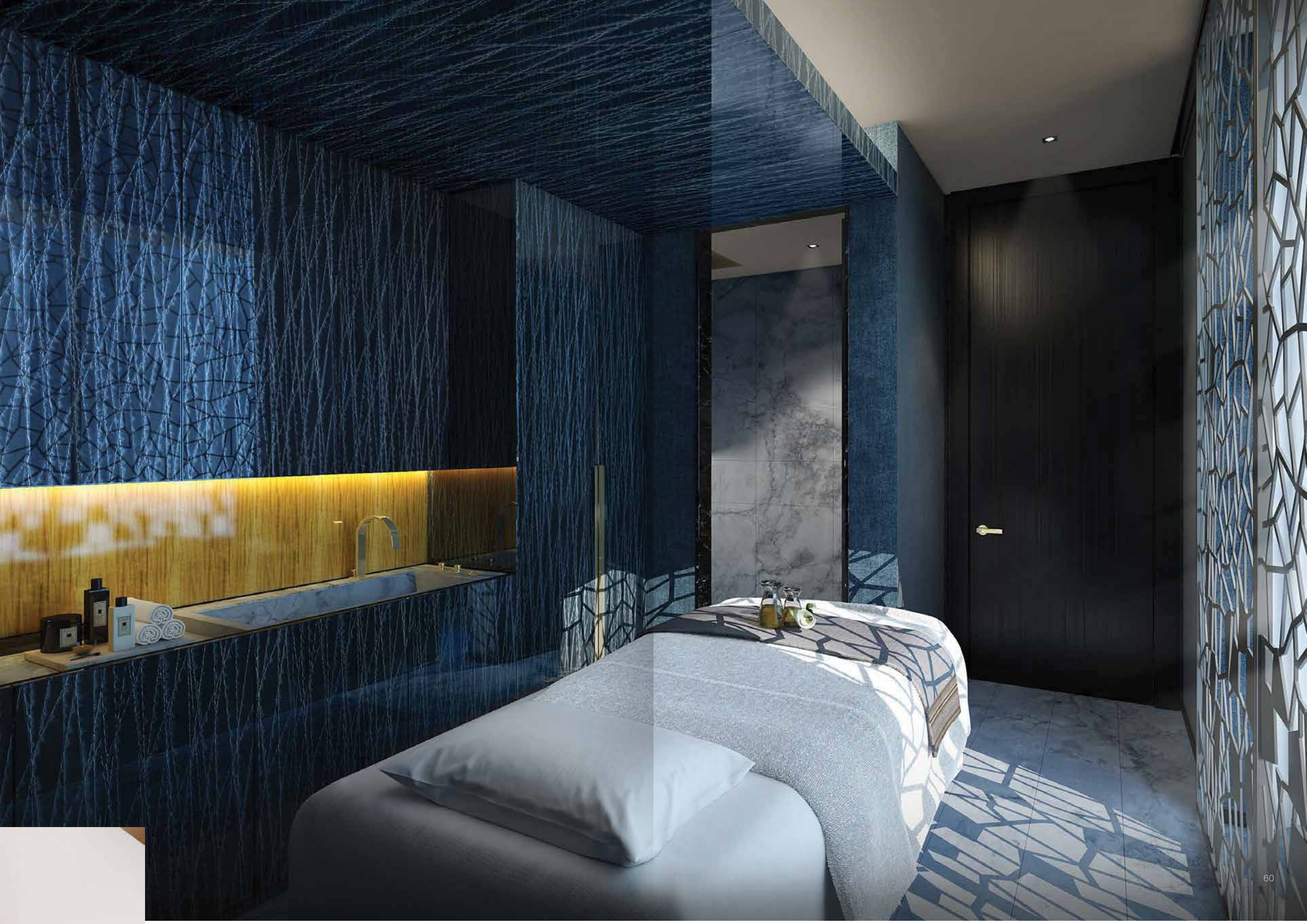
FAMILY & CHILDREN

KIDS CLUB	Supervised activity rooms Creative learning spaces
FAMILY AREAS	Family pool zones Indoor & outdoor play areas

EVENTS & BUSINESS

BUSINESS FACILITIES	Boardrooms Multi-purpose meeting rooms
EVENT VENUES	Grand ballroom Banquet halls Wedding & celebration venues
SUPPORT SERVICES	Catering AV support Event coordination by Four Seasons specialists











MADE TO ENDURE

Refined from Within

Residents enjoy privileged access to Four Seasons hotel amenities while main Interiors are composed with timeless materials, calm palettes, and thoughtful proportions. Every space feels considered, balanced, and enduring, maintaining complete residential privacy. Hospitality is close — never intrusive.





DESIGNED FOR LIVING

Nothing Excessive

Layouts prioritize comfort and flow, supporting daily life as naturally as formal entertaining.



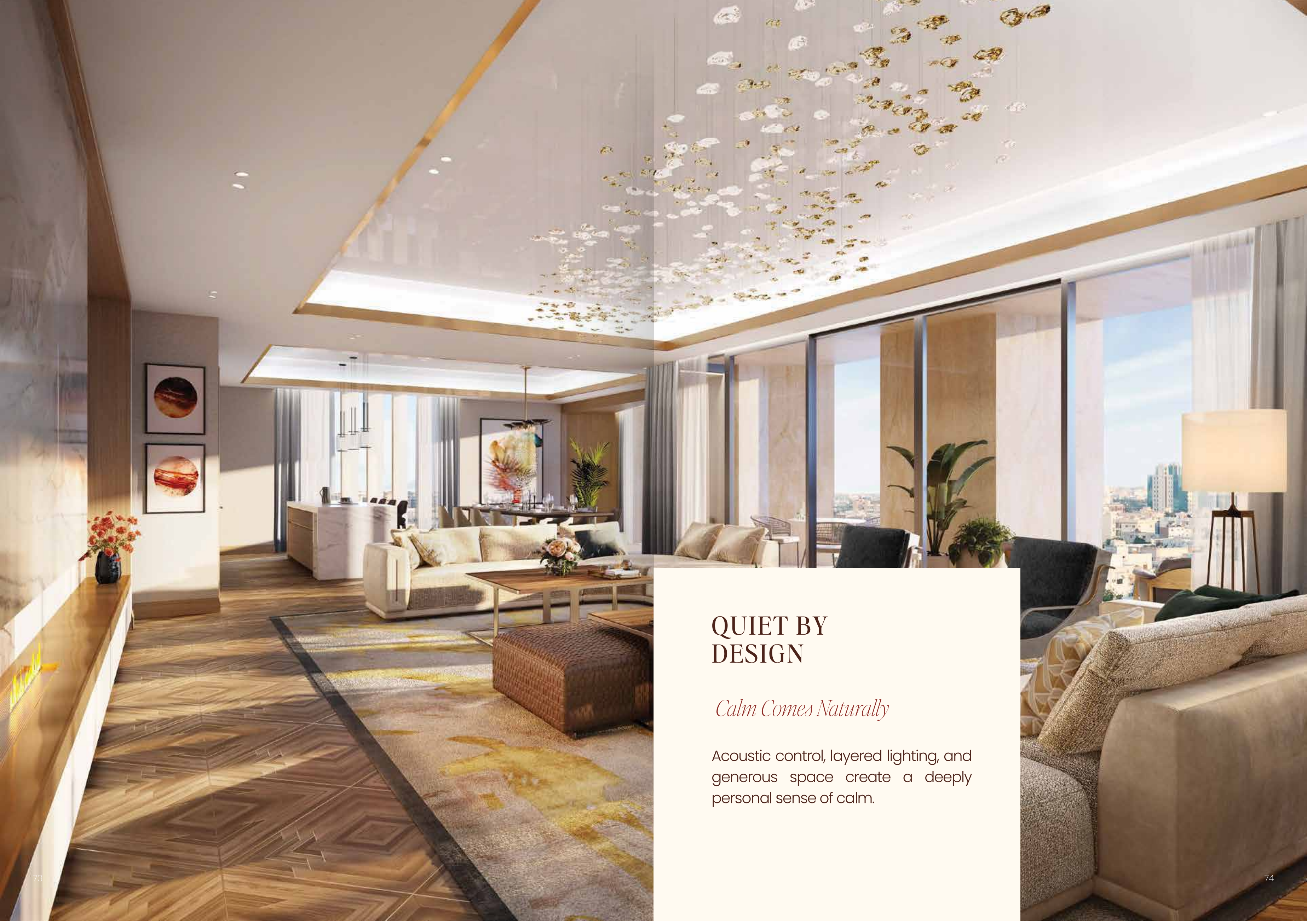


PRIVATE SANCTUARIES

Your Personal Retreat

Bedrooms and private suites are designed as places of rest and renewal, sheltered from the outside world.





QUIET BY DESIGN

Calm Comes Naturally

Acoustic control, layered lighting, and generous space create a deeply personal sense of calm.

AREAS

1 Bed

167 SQM | 1,798 SQFT

2 Bed

249 SQM | 2,680 SQFT

3 Bed

313 SQM | 3,369 SQFT

4 Bed

391 SQM | 4,209 SQFT

5 Bed

558 SQM | 6,006 SQFT

2 Bed Duplex

308 SQM | 3,315 SQFT

3 Bed Duplex

328 SQM | 3,531 SQFT

6 Bed Penthouse

1,135 SQM | 12,217 SQFT





Above All Else

Penthouses offer expansive layouts, heightened privacy, and commanding views, the most elevated expression of residence living.





A RARE OFFERING



Reserved by Design

Designed for those who value scale,
privacy, and distinction above all.





A World Within Reach

Residents enjoy privileged access to Four Seasons hotel amenities while maintaining complete residential privacy. Hospitality is close – never intrusive.

HOTEL- ADJACENT PRIVILEGE





THE
WORLD

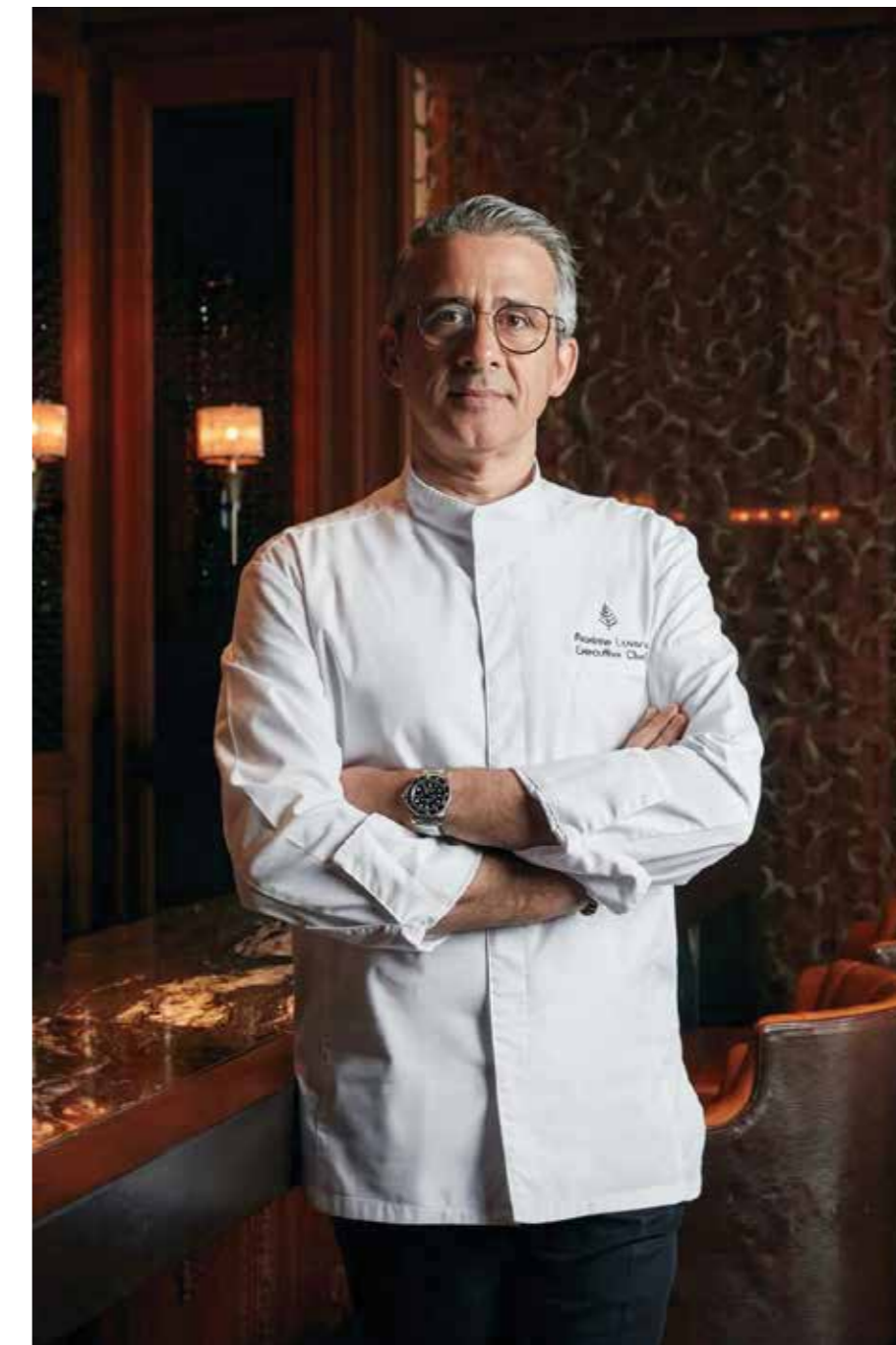


Connected, Not Crowded

Dining, wellness, and services are moments away, enhancing daily life without compromising discretion or calm.

THE BEST
OF BOTH
WORLDS





LIVING & DINING

Made to Gather

Living spaces are generous yet intimate, designed for connection, conversation, and everyday elegance.





ENTERTAINING WITH EASE

Effortless Hosting

Show kitchens, service kitchens, and seamless circulation support hosting of any scale.





OUTDOOR LIVING

Life in the Open

Gardens, walkways, and open-air spaces invite movement, pause, and reflection.

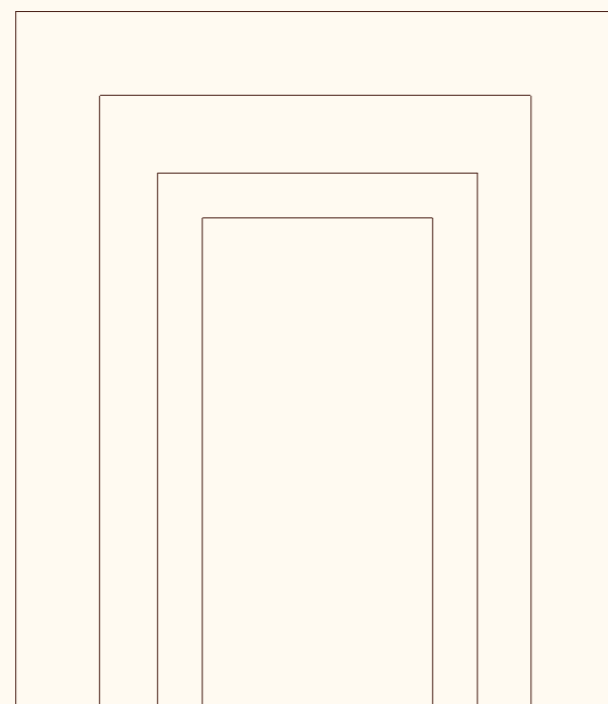




A LASTING ADDRESS

Defined for Generations

More than a residence, this is an address shaped by meaning, quality, and permanence.





About Fana Limited Company:

Established in 1989, we strive to meet your needs and desires in the world of real estate.

We offer a wide range of real estate services that cover every aspect of this dynamic field.

With our extensive experience and specialized team, we are committed to achieving the best outcomes for our clients.

Contact us today to begin your journey in the world of real estate.



Our Vision

To lead in real estate marketing, organizing auctions, and property management and real estate development.



Our Mission

To deliver professional services using effective tools and modern specialized technologies, under the management and supervision of a distinguished team of highly skilled experts.

Our Services



Real estate development and
facility management



Licensed by the
Real Estate General Authority



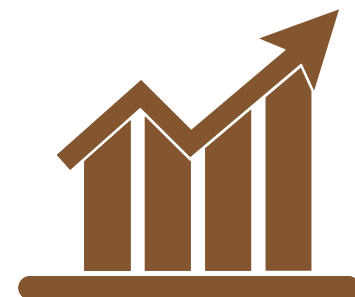
Organizing auctions



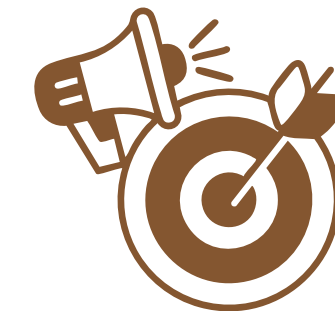
Licensed judicial
sales agent accredited
by the Ministry of Justice



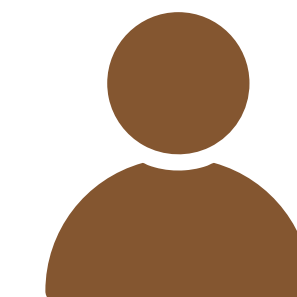
Real estate financing
brokerage



Property Management
And Facility Management



Real estate
marketing



Real estate
brokerage



Contact Information

-  0555982848
-  0555982848
-  WWW.FANA.SA
-  hello@fana.sa
-  RGHA6395, 6395 Prince Turki Ibn Abdulaziz Al Awal Rd,
Al Muhammadiyah Dist, Riyadh 12362 – 3205, Saudi Arabia

FAL brokerage and marketing license:(1200023695)
FAL Auction Real Estate License:(4200000414)
Property Management License:(2200004350)



Whatsapp

Scan The Barcode
To Access The Site



WebSite

Scan The Barcode
To Access The Site



Licenses

تمنح الهيئة العامة للمقار بموجب هذه الوثيقة رخصة فال لممارسة النشاط العقاري وذلك حسب البيانات أدناه:

27/12/2023	بتاريخ	1200023694	رخصة رقم
شركة فانا المحدودة شركة ذات المسؤولية من شخص واحد		اسم المرخص	
فال للوساطة والتسويق		النشاط العقاري	



هذه الوثيقة صادرة من النظام الإلكتروني ولا تحتاج إلى توقيع وتعتبر هذه الرخصة سارية حتى تاريخ 27/12/2026

Fal Real Estate Brokerage License

تمنح الهيئة العامة للمقار بموجب هذه الوثيقة رخصة فال لممارسة النشاط العقاري وذلك حسب البيانات أدناه:

29/01/2024	بتاريخ	4200000414	رخصة رقم
شركة فانا المحدودة شركة ذات المسؤولية من شخص واحد		اسم المرخص	
فال للمزادات العقارية		النشاط العقاري	



هذه الوثيقة صادرة من النظام الإلكتروني ولا تحتاج إلى توقيع وتعتبر هذه الرخصة سارية حتى تاريخ 29/01/2027

Fal Property Management License

تمنح الهيئة العامة للمقار بموجب هذه الوثيقة رخصة فال لممارسة النشاط العقاري وذلك حسب البيانات أدناه:

29/01/2024	بتاريخ	4200000414	رخصة رقم
شركة فانا المحدودة شركة ذات المسؤولية من شخص واحد		اسم المرخص	
فال للمزادات العقارية		النشاط العقاري	



هذه الوثيقة صادرة من النظام الإلكتروني ولا تحتاج إلى توقيع وتعتبر هذه الرخصة سارية حتى تاريخ 29/01/2027

Fal Auction License